

WILTSHIRE POLICE

# MALMESBURY CPT AREA BOARD REPORT

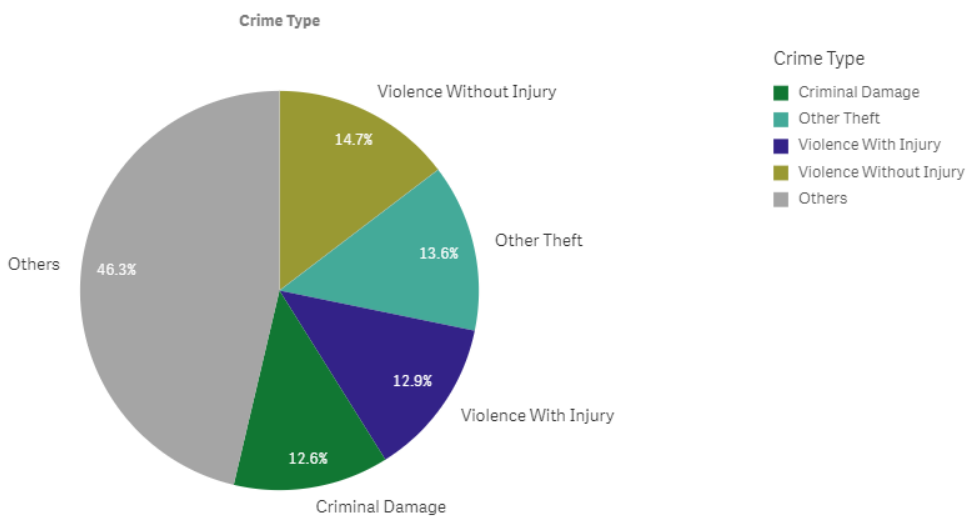


Proud to serve and protect our communities

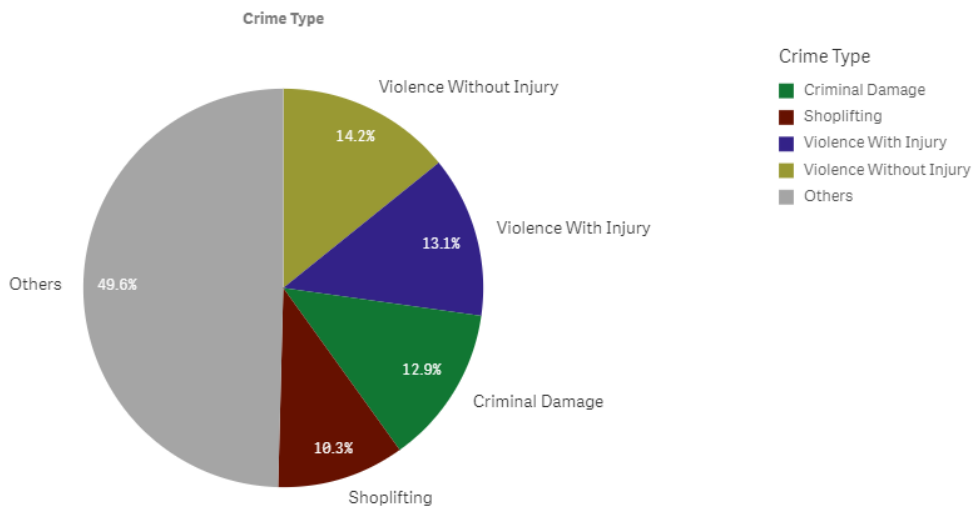
September 2019

## PERFORMANCE

Your Area - Five Highest Crime Groups (Previous 12 months)



Force Area - Five Highest Crime Groups (Previous 12 months)



Wiltshire North CPT - crime and incident demand for the 12 months to July 2019

WILTSHIRE POLICE

# MALMESBURY CPT AREA BOARD REPORT



Proud to serve and protect our communities

September 2019

## Force-wide

- Wiltshire Police has reduced the volume of recorded crime by 1% in the 12 months to July 19 and continues to have one of the lowest crime rates in the country.
- Our service delivery remains consistently good.
- In July, we received 9,653 999 calls which we answered within 4 seconds on average and 14,474 101 calls which we answered within 1 minutes 44 seconds on average.
- In July, we also attended 1,862 emergency incidents within 10 minutes and 49 seconds on average.
- Wiltshire Police has seen a 26% reduction in vehicle crime and 20 per cent in burglary in the 12 months to June 2019. These are the most improved trends in the country.
- The Crime Survey of England & Wales recently ranked Wiltshire as one of the top forces nationally for public confidence. It covers the 12 months to December 2018 The publication can be found here: [WWW.CRIMESURVEY.CO.UK](http://WWW.CRIMESURVEY.CO.UK)

For more information on Wiltshire Police's performance please visit:

PCC's Website - <https://www.wiltshire-pcc.gov.uk/article/1847/Performance>

HMICFRS Website - <https://www.justiceinspectrates.gov.uk/hmicfrs/police-forces/wiltshire/>

Police.uk - <https://www.police.uk/wiltshire>

WILTSHIRE POLICE

# MALMESBURY CPT AREA BOARD REPORT

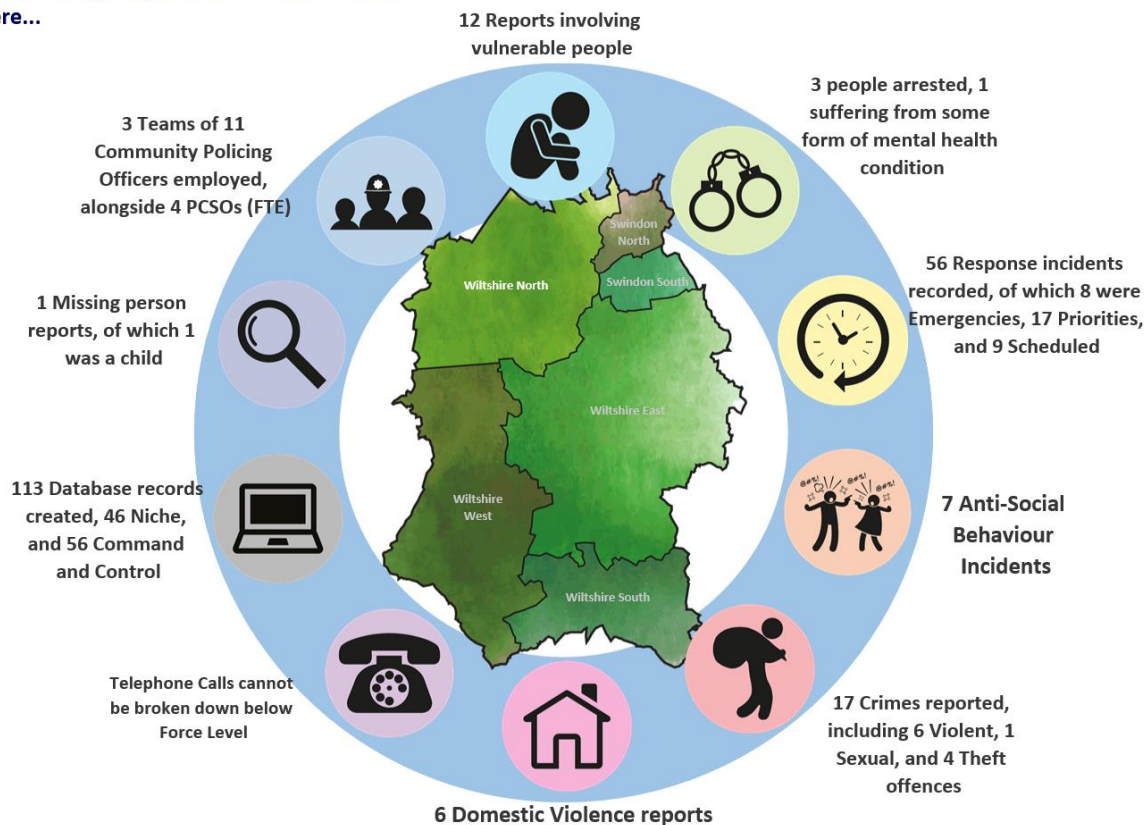


Proud to serve and protect our communities

September 2019

## Area specific

On an average day in Wiltshire North there were...



Wiltshire North CPT Demand Overview – 12 months to July 2019

- Insert any performance stats relating to CPT priorities (CPT to do)



WILTSHIRE POLICE

# MALMESBURY CPT AREA BOARD REPORT



Proud to serve and protect our communities

September 2019

## HIGH LEVEL CPT UPDATES:

### INCIDENTS TO NOTE:

20/06//2019 – CRIME – BURGLARY, RESIDENTIAL (DWELLING)

HONEY LANE, NORTON. WILTSHIRE

Unknown suspect(s) have smashed a small pane of glass to open a window. Suspect(s) have attempted to break into a stable where a lawn mower is stored, but failed to gain access. Suspect(s) has broken off the lock of the storage container within the grounds of the property, suspect has entered the container but not believed to have stolen any contents, other than the broken locks.

05/07/2019 – CRIME – ATTEMPT BURGLARY, RESIDENTIAL (DWELLING)

THE STREET, BRINKWORTH, NR. MALMESBURY

Whilst occupants were away on holiday, suspect(s) have tried to gain entry into a home by forcing entry via the front door of the property. No entry was gained.

04/08/2019 – CRIME – BURGLARY, RESIDENTIAL (DWELLING)

UPPER MINETY, NEAR MALMESBURY.

Unknown suspect(s) have gained entry to the property via a rear study window which has been forced open, messy search conducted, cash and jewellery taken. Stole cash and jewellery.

16/08/2019 – CRIME – BURGLARY, RESIDENTIAL (DWELLING)

FLISTERIDGE ROAD, UPPER MINETY.

A known male suspect has gained entry into a property and stolen a bottle of wine. The male was located by Police and arrested for burglary. This male is due in court at the end of September. This same male has been issued with a Community Protection Warning.

The Community Protection warning has been issued to protect the local community, if the offender re-offends.

WILTSHIRE POLICE

# MALMESBURY CPT AREA BOARD REPORT



**Proud** to serve and **protect** our communities

September 2019

21/08/2019 – CRIME – ASSAULT, MALMESBURY TOWN CENTRE.

On 21<sup>st</sup> August Police were called to a '999' report near to the town centre, Malmesbury. A male was located and arrested for 4 separate offences, Affray, threats to kill, assault and criminal damage. This male has been charged with all 4 offences and will be attending court in the near future.



WILTSHIRE POLICE

# MALMESBURY CPT AREA BOARD REPORT



Proud to serve and protect our communities

September 2019

## YOUR CPT – Wiltshire North



Inspector Mark Luffman



Sergeant Don Pocock

### Community Co-ordinators:



PC Hazel Anderson (Chippenham and Corsham)



PC Steve Carroll (Calne)



PC Rachel Davies (Royal Wootton Bassett, Malmesbury and Cricklade)

### To be added by CPT Inspector

- Info on who are the local policing team and geographical area they cover
- Any upcoming surgeries or meetings planned

You can find out more about Wiltshire North CPT, including news stories and contacts for local officers, on our website: [www.wiltshire.police.uk/WiltshireNorth](http://www.wiltshire.police.uk/WiltshireNorth)

WILTSHIRE POLICE

# MALMESBURY CPT AREA BOARD REPORT



Proud to serve and protect our communities

September 2019

## LOCAL PRIORITIES

CPT Inspector to update progress on each

PRIORITIES FOR WILTSHIRE NORTH CPT	UPDATE
Priority 1:	
Priority 2:	
Priority 3:	
Priority 4:	



WILTSHIRE POLICE

# MALMESBURY CPT AREA BOARD REPORT



Proud to serve and protect our communities

September 2019

## HIGH LEVEL PCC UPDATES

- **Pay increase** - Police Officers are to receive a 2.5% pay increase as agreed by the Government. This is welcome news and well deserved, I only hope that the same increase is also afforded to police staff as well. However, it is expected that we will have to meet this increase from existing Wiltshire Police budgets and that no further funding will come from the Government to fund this rise, which is disappointing and I continue to lobby the Government for fairer funding in Wiltshire.
- **PCSOs** - Last month Wiltshire Police Federation, which represents police officers within the Force, wrote an open letter suggesting that the Force should 'axe PCSOs' and recruit police constables instead. Both the Chief and I strongly refuted this suggestion. We both recognise the key role that PCSOs play in community engagement, intelligence gathering and supporting the most vulnerable. The role of a PCSO is a completely different one to that of a police constable and they play a key role in our community policing teams.
- **Additional police officers** - I was pleased to hear the new Prime Minister's commitment to policing and his promise of 20,000 additional police officers in the next three years. We don't know what this will look like in terms of how many more we will get in Wiltshire but I trust that more detail will soon be forthcoming. I do have some concerns around the practicalities of recruiting so many officers in such a short period of time and it certainly won't happen overnight, with it taking around a year to recruit and train an officer before they're able to go on the beat, but his commitment to strengthening our police forces is welcome nonetheless.

## HIGH LEVEL FORCE UPDATES

- **Youth crime** – A Government report into the increase in youth violence has been welcomed by the Force. Chief Constable Kier Pritchard has said that although there hasn't been a significant increase in Wiltshire, it is still a concerning issue for local people. He is calling for a multi-agency approach and focused on the need to engage with young people to help prevent them from falling into a life of crime.
- **Rural crime** – Wiltshire has bucked the national trend when it comes to rural crime, recording a 36% year-on-year drop when it comes to the amount of money this type of crime is costing people in the county. This is believed to be due to the focus our Rural Crime Team has placed on crime prevention advice, including the encouragement of CCTV, anti-poaching ditches and the installation of GPS trackers on equipment.



WILTSHIRE POLICE

# MALMESBURY CPT AREA BOARD REPORT



Proud to serve and protect our communities

September 2019

- **Domestic abuse** – As part of our Summer Demand campaign, we have been focusing on highlighting the important topic of domestic abuse and making sure victims know how to access the support available. There is also a focus on encouraging friends and neighbours to report concerns to the police. You can read more online: <https://www.wiltshire.police.uk/article/4820/VIDEO-What-to-do-if-you-have-concerns-your-neighbour-is-being-abused-by-a-partner>

## GET INVOLVED

- You can keep up to date with the latest news in your area by signing up to our Community Messaging service – [www.wiltsmessaging.co.uk](http://www.wiltsmessaging.co.uk)
- You can follow your CPT on social media <https://www.wiltshire.police.uk/Followus>
- More information on your CPT area can be found here: [www.wiltshire.police.uk](http://www.wiltshire.police.uk) and here [www.wiltshire-pcc.gov.uk](http://www.wiltshire-pcc.gov.uk)

## FEEDBACK/ACTIONS TAKEN